



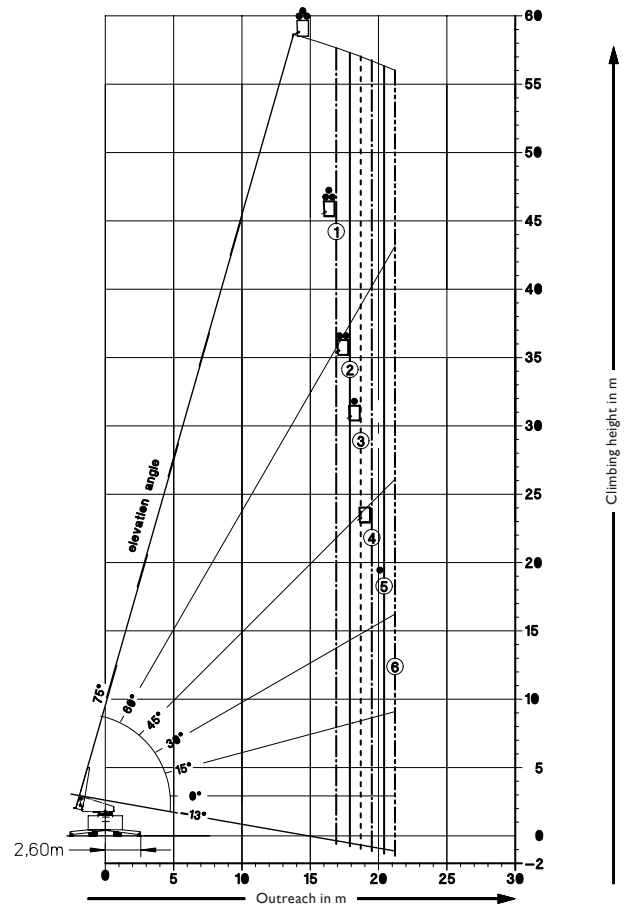
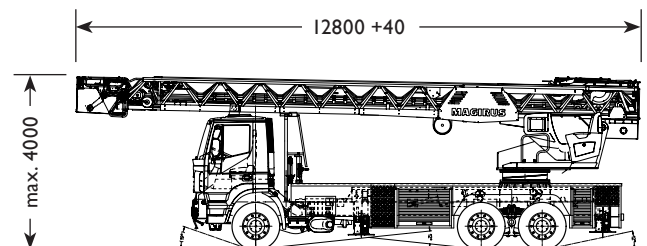
Vehicle figures	
<b>Chassis</b>	IVECO MAGIRUS Trakker 260 T 36
<b>Engine power</b>	265 kW / 360 HP
<b>Wheelbase</b>	5,100 / 1,380 mm
<b>Cab + Seats</b>	All steel technology 1+2
<b>Gross vehicle weight</b>	26,000 kg

**SUPERSTRUCTURE:**

- Rescue height / operating height: 58 m / 60 m
- Rescue cage RC 300: 3 persons

**OPTIONS:**

- Autopilot: Memory control, shaft rescue function, automatic ladder rest position
- Swivel device for stretcher: 200 kg
- Electric remote controlled water monitor, with oscillation function
- Load eye up to 300 kg on the cage floor and on top ladder section up to 400 kg, e.g. for the transport of loads or rescue of oversized persons with heavy duty stretcher.
- Crane device up to 4,000 kg on lower ladder section
- Descent device on the cage
- Exterior design and painting options
- Centrifugal fire pumps
- Foam proportioning systems
- Power supply to the cage, 3 x 240, 1 x 400 V, with floodlights
- Self protection nozzles on the cage
- Elevator for 2 persons 180 kg
- Radio remote control for elevator
- Wind gauge
- Remote diagnostic system
- Wide ranging additional equipment available
- Superstructure may be also mounted on any other suitable chassis

**Performance envelope****Vehicle dimensions****ADVANTAGES / SPECIAL FEATURES:**

- Full automatic turntable ladder with combined, simultaneous movements
- 6-sections ladder set with active oscillation damping CS (Computer Stabilized)
- VARIO jacking safety system
- Ladder turret with automatic self-levelling up to 14% side slope
- Very easy to safely operate thanks to display indications and computer monitoring
- Rescue cage with centrally arranged control stand and entrance gates at the cage front corners according to practical experience