



Vehicle figures	
<b>Chassis</b>	IVECO MAGIRUS EuroCargo I40 E 25 4x2
<b>Engine power</b>	185 kW / 251 HP
<b>Wheelbase</b>	3,960 mm
<b>Cab + Seats</b>	All steel technology I+2
<b>Gross vehicle weight</b>	14,000 kg

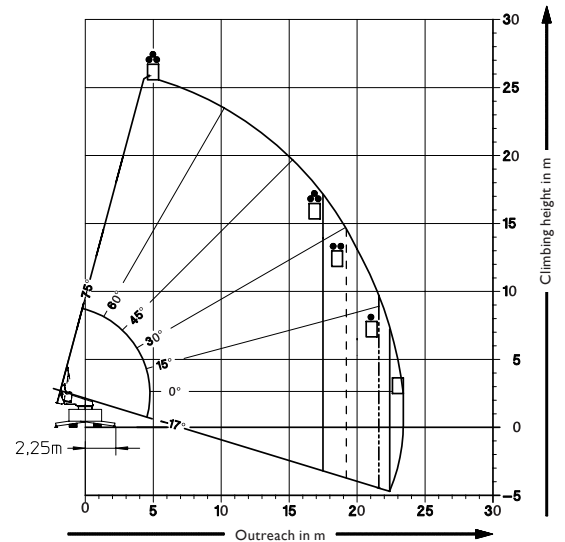
#### SUPERSTRUCTURE:

- Semiautomatic turntable ladder with sequential movements acc. DIN EN 14 044
- Four-section ladder set
- VARIO jacking safety system
- Ladder turret with automatic self-levelling up to 17,6 % side slope
- Very easy to safely operate thanks to display indications and computer monitoring
- Hydraulic system for sequential movements
- Rescue height / operating height: 25,5 m / 27 m
- Rescue cage RC 300: 3 persons

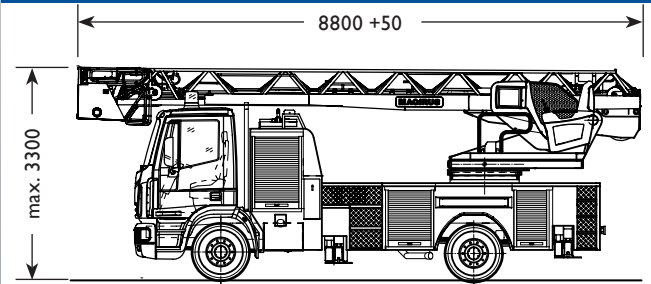
#### OPTIONS:

- Swivel device for stretcher: 200 kg
- Hose reel with 35 m hose, foldable into the ladder set
- Automatic ladder rest position
- Remote diagnostic system
- Thermal imaging / real imaging camera on rescue cage
- Rescue cage RC 300, pre-piped for monitor
- Crane device for lifting and lowering loads of max. 4,000 kg
- Manual or electric controlled water monitor, mountable or permanent integrated
- Load eye for the transport of loads or rescue of oversized persons with heavy duty stretcher:
  - Load eye on cage floor RC 300: 300 kg
  - Load eye on top ladder section: 400 kg
- Mounting for positive pressure ventilator on rescue cage
- Descent device on the cage
- Foldable seat in the cage
- Exterior design and painting options
- Power supply to the cage and several lightings
- Wide ranging additional equipment available
- Superstructure may be also mounted on any other suitable chassis

#### Subject to technical modifications



#### Vehicle dimensions



#### ADVANTAGES / SPECIAL FEATURES:

- VARIO jacking safety system
- Ladder turret with automatic self-levelling up to 17,6% side slope
- Very easy to safely operate thanks to display indications and computer monitoring
- Rescue cage with centrally arranged control stand and entrance gates at the cage front corners according to practical experience