









# GOOD REASONS FOR THE MAGIRUS PLATFORM.

- Fastest set-up time with approx. 120 sec
  - Impressive outreach figures: 21.3 m with 500 kg and 24.4 m with 120 kg platform loads respectively
  - The best platform load in its class: 500 kg
  - Maximum manoeuvrability due to short wheel base (4.50 m) and a vehicle length under 9 m
  - Highest reliability through a system partnership with one of the leading and most reputed manufacturers in the sector
  - Same operating components and philosophy as for the MAGIRUS turntable ladder
    - Water output up to 3.800 l/min
    - Specially developed to meet the extreme demands faced by fire brigades



# THE OTHER WAY TO THE TOP.

Along with turntable ladders, telescopic aerial platforms are indispensable in aerial rescue deployment. The new 30 m class MAGIRUS platform – developed implementing the unique MAGIRUS aerial rescue know-how – meets all requirements found in today's fire-fighting operations.

Features	
<b>Permissible GVW</b>	18 t / 26 t
<b>Crew</b>	1+2
<b>Operating height</b>	33 m
<b>Rescue cage</b>	5 persons, 500 kg
<b>Chassis</b>	4 x 2
<b>Pumps</b>	Optional

## MAXIMUM EASE OF OPERATION. IMPRESSIVE PERFORMANCE CAPABILITIES.

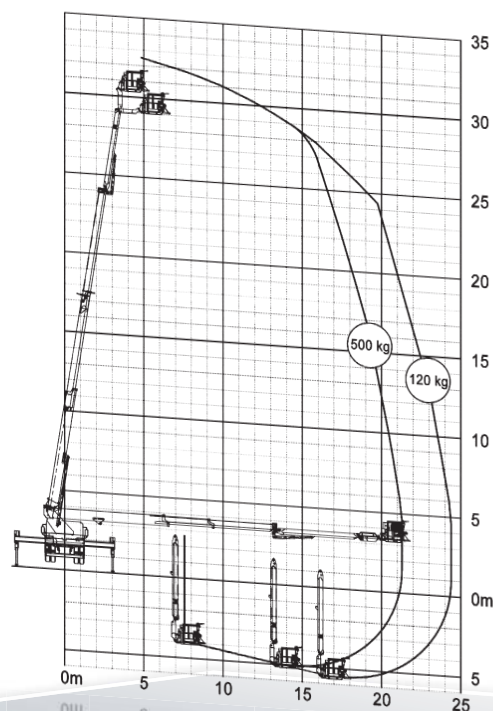
The new MAGIRUS aerial platform M 33 P retains the successful basic concept of the previous platforms but has undergone a complete overhaul regarding the mast technology and detailed solutions. A central feature of the new platform generation is an optimized hydraulic system which allows a set-up time of approx. 120 seconds and an outreach of max. 24.4 m. It has an operating height of 33 m. The basis of the M 33 P is a chassis with 18 ton gross weight and a total vehicle length under 9 m. With a chassis over 18 ton, there is the possibility of integrating a permanently installed fire pump and an extinguishing agent tank (option).



Set-up time according to EN 1777

< 120 sec

M 33 P	18 t – 4x2	26 t – 6x2
<b>Total length (mm)</b>	8.900	8.900
<b>Total width (mm)</b>	2.500	2.500
<b>Total height (chassis-dependent) mm</b>	3.200 - 3.500	3.200 - 3.500
<b>Max. outreach with 500 kg (m)</b>	21,3	21,3
<b>Max. outreach with 120 kg (m)</b>	24,4	24,4
<b>Max. below ground level operations (m)</b>	5	5
<b>Variable jacking width up to max. (mm)</b>	6.000	6.000
<b>Size of rescue cage (m x m x m)</b>	2,1 x 0,9 x 1,1	2,1 x 0,9 x 1,1
<b>Water output (l/min)</b>	2.500 – 3.800	2.300 – 3.800
<b>Max. wind speed (m/s)</b>	12,5	12,5





**Telescopic boom** with pre-piped waterway made of aluminium and stainless steel for water supply of up to 3,800 l/min. Cranes eyes with lifting capacity up to 2.5 t



**Unrivalled additional pivot point** for more flexibility at the operation site



**Rescue ladder** with automatic folding handrail and unhindered climbing space for safe ascend



#### Mast

- 3-section main boom and a 2-section telescopic articulated arm with rescue and working platform mounted on the top
- Additional aluminium ladder set

#### Weight-optimized telescopic boom

- Made of high-strength fine-grained steel
- Guided on smooth-running synthetic material sliding pads
- For maximum outreach performance

#### Spacious work cage

with approx. 2 m<sup>2</sup> floor surface and several mounting options

#### Energy chain

- With integrated supply of power, hydraulic oil and breathing air
- Low maintenance and wear characteristics

#### Power and water supply

- Permanently installed power cables and water piping (DN 100)

#### Boom extension

- Via hydraulic cylinder and redundant cable/chain system



# INTELLIGENCE CAN BE SO PRAGMATIC.

## Operator's control stand

The ergonomically designed operator's control stand has joystick control functions and plain text control panel. The operator can change the display housing's angle of inclination in order to adapt to his own particular requirements.





### Jacking control unit

The clearly arranged control panel is integrated in the rear of the vehicle appropriately protected against the weather. The ergonomically-optimised joystick can easily be operated with gloves.



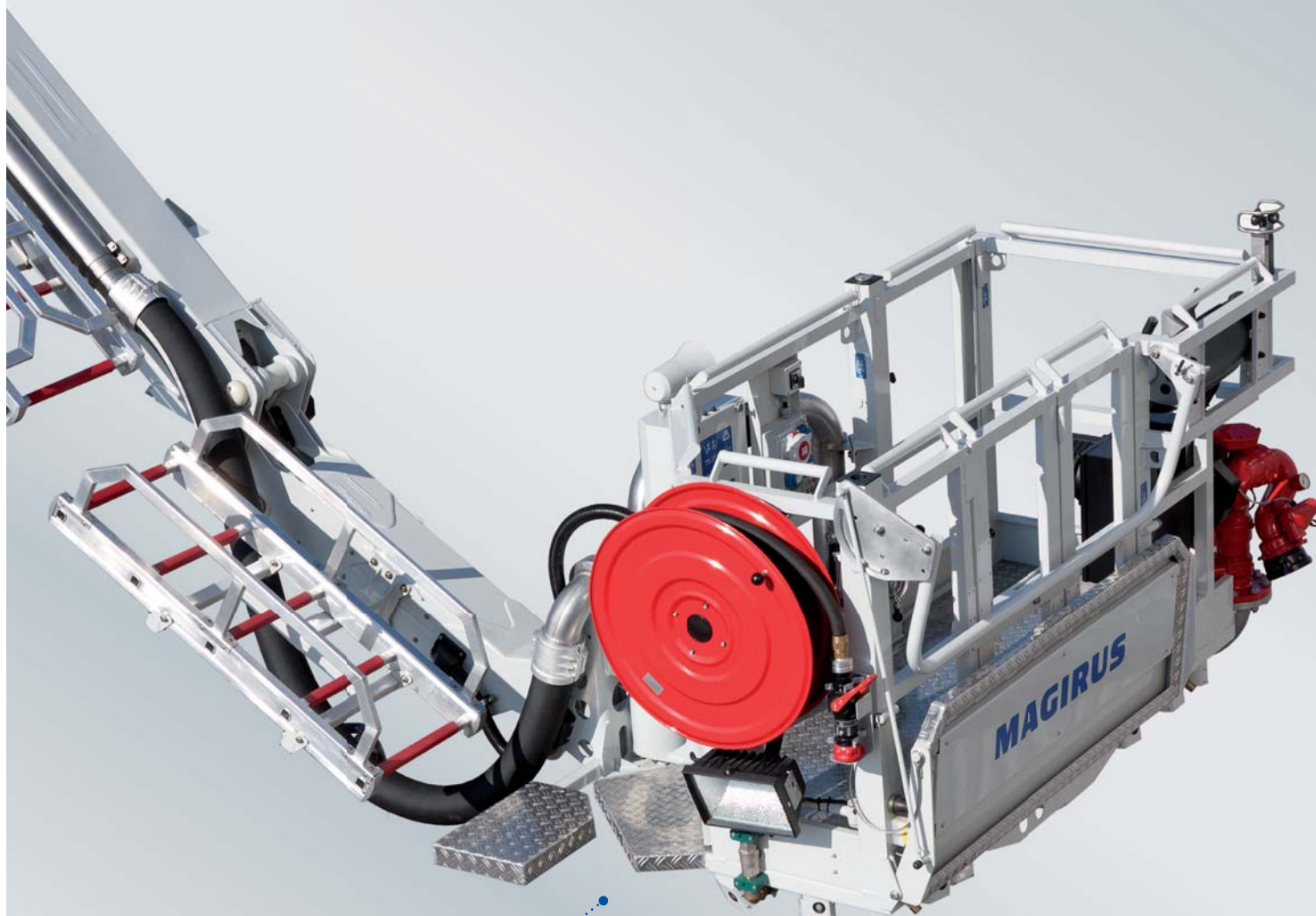
### Jacking system

The horizontal-vertical system allows the jacking of the platform to be carried out for any width from 2,500 mm up to 6,000 mm. Through the continuous outreach control, an automatic changeover to the respective largest possible outreach figure takes place with different jacking widths. As the four outriggers are variably controlled, this means that the supporting base can be optimally adapted to suit the ground conditions. Differences in level of up to 7° and 550 mm can be compensated.



- 1 Through the continuous individually-extended outriggers, the jacking area can be optimally exploited – even in narrow spaces.
- 2 Due to an integrated ground contact pressure safety system, the stability is constantly monitored.
- 3 The jacking control panels at the rear are user-friendly, clearly arranged and back-lit after dark. The softkeys are also easy to operate with gloves.  
The display (optional) for showing the actual outreach values in accordance with each jacking operation is mounted at the rear and is illuminated.





#### Cage

- Loading capacity 500 kg / 5 persons
- 2 m<sup>2</sup> surface area
- 2 multi-functional columns
- Barrier-free access
- Suitable for wheelchairs

#### Working platform

- Additional foldable working platform at the front of the rescue cage, loading capacity 200 kg

#### Ventilator unit (option)

pluggable on the multi-functional column.



#### Comprehensive range of lighting systems

available, e.g. 24V halogen floodlights or Xenon working lights (option).



**230V halogen floodlights** on the sides and at the bottom of the rescue cage provide optimal lighting at the scene of operation.





# A CAGE FULL OF POSSIBILITIES.

- 1 For better communication at the scene of operation, loudspeakers and an intercom system can be installed in the cage.
- 2 The stretcher swivel support is suitable for all kinds of stretchers and rescue baskets. It can be mounted at the right side of the rescue cage. This creates the best possible conditions for rescuing persons who must be transported lying down.
- 3 3 x 230 V und 1 x 400 V rescue cage power supply available.
- 4 Power supply through different portable or hydraulically-driven generators.
- 5 Light bridges can be plugged on the left or right side. For internal fire fighting operations, a quick attack hose reel on the cage complete with a 20 m hose is available (option).



1



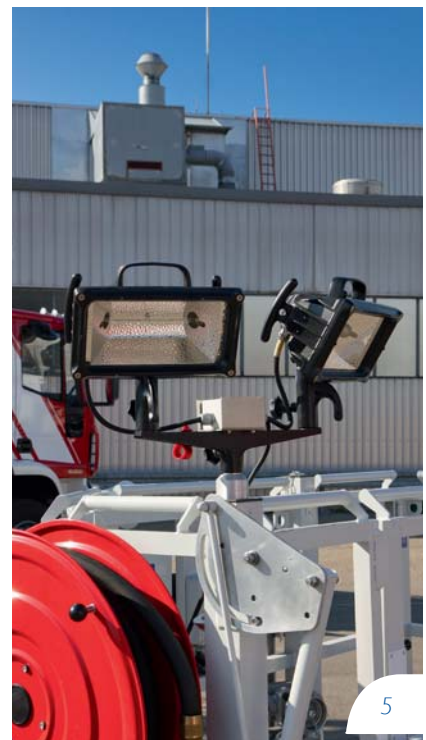
3



2



4



5

# RESCUING. EXTINGUISHING. HELPING: AT THE VERY HIGHEST LEVEL.



1 The display in the rescue cage is controlled via softkeys, its user interface is analogue to the one of the main control stand.

2 The permanently installed high-performance water monitor has an output of 3,800 l/min which means it can deal with huge blazes.

3 The foldable working platform expands the options available for fire-fighters when working on a building, rescuing people or extinguishing small fires.

4 The rescue cage access points – one at the front and two at the rear – are generously sized. The front access is also suitable for wheelchairs.



- 1 The anemometer provides information on the actual wind speed. Maximum safety is guaranteed up to 12.5 m/s.
- 2 On the front side of the rescue cage, fitted water spray nozzles provide protection. Additionally, ultrasonic distance warning sensors and a power line and high-voltage proximity device are available.
- 3 Real imaging and thermal imaging cameras (options) provide the best overview.  
In both cases pictures can be directly transferred to the display on the main control stand.
- 4 The water supply for the permanently mounted monitor in the rescue cage is carried out from the rear of the vehicle via piping through to the rescue cage. In addition to the front entry, the cage has two access points on the rear.
- 5 A load hook on the bottom of the cage carries up to 500 kg. Furthermore, load rings with 2,500 kg capacity are mounted on each telescopic section.
- 6 Max. 2 water connections B, C, D in the rescue cage are available (option).
- 7 The cage can be swiveled of  $\pm 50^\circ$ .





IVECO MAGIRUS supplies everything from a single source:

- a globally unique, complete range of vehicles for fire fighting, aerial rescue and civil protection
- chassis, cabs, equipment compartment bodywork, outfitting and pumps
- 145 years of experience and the power of continuous innovation

**[www.iveco-magirus.net](http://www.iveco-magirus.net)**

**Iveco Magirus**  
**Brandschutztechnik GmbH**  
Graf-Arco-Strasse 30 · D-89079 Ulm  
Fax +49(0)731/408-2410  
E-Mail: [magirus@iveco.com](mailto:magirus@iveco.com)  
[www.iveco-magirus.net](http://www.iveco-magirus.net)

**IVECO**  
**MAGIRUS**